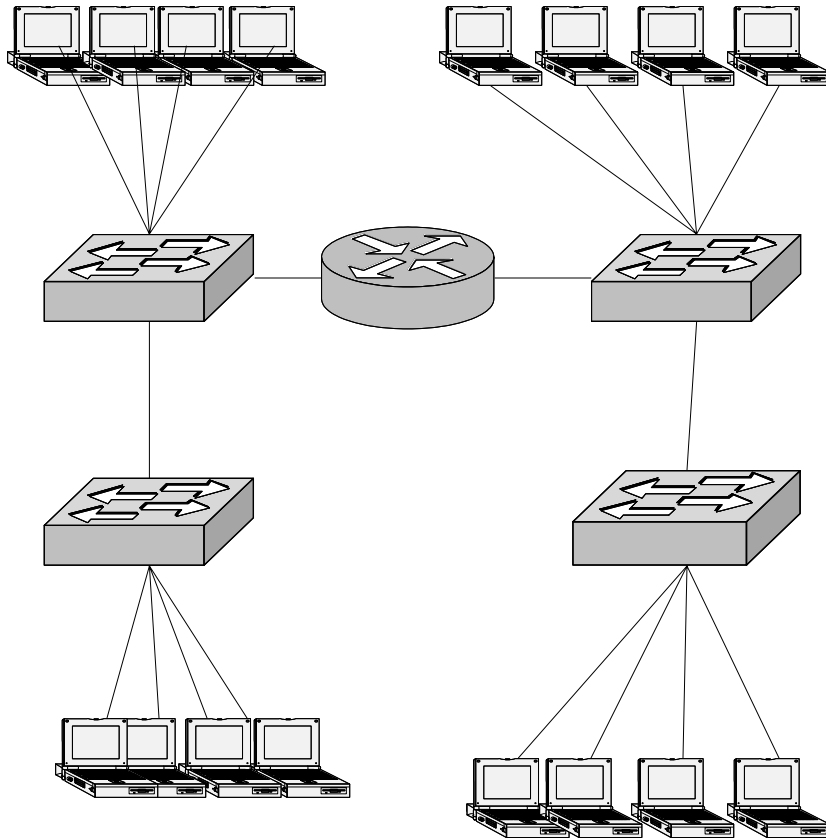


## CET 2930 TCP/IP Planning Exercise



### Scenario:

Your company has been assigned the network address of 223.5.10.0/24. Based on the structure of your organization, you decided to subnet this network into 4 subnets. The first available subnet will be used to address hosts in the Accounting Department (door side), and the second available subnet will be used to address hosts in the HR Department (instructor side).

### Requirements:

1. Configure the TCP/IP properties in your workstation with the following Information:

IP address: \_\_\_\_\_

Subnet Mask: \_\_\_\_\_

Default Gateway: \_\_\_\_\_

2. When you are done, view your workstation's TCP/IP properties. Which command did you use? \_\_\_\_\_

3. From the output of the previous command, what is your workstation's MAC address? \_\_\_\_\_

4. To test connectivity between your workstation and other workstations on your segment, connect the equipment on each side as shown in the diagram and Ping one of your neighbors. What was your neighbor's IP address? \_\_\_\_\_ . Was the Ping successful? \_\_\_\_\_

5. What type of equipment is needed for a station on the HR department to communicate with a station on the Accounting department? \_\_\_\_\_

6. Use packet tracer to build the topology and trace packets between the two departments and within each department.