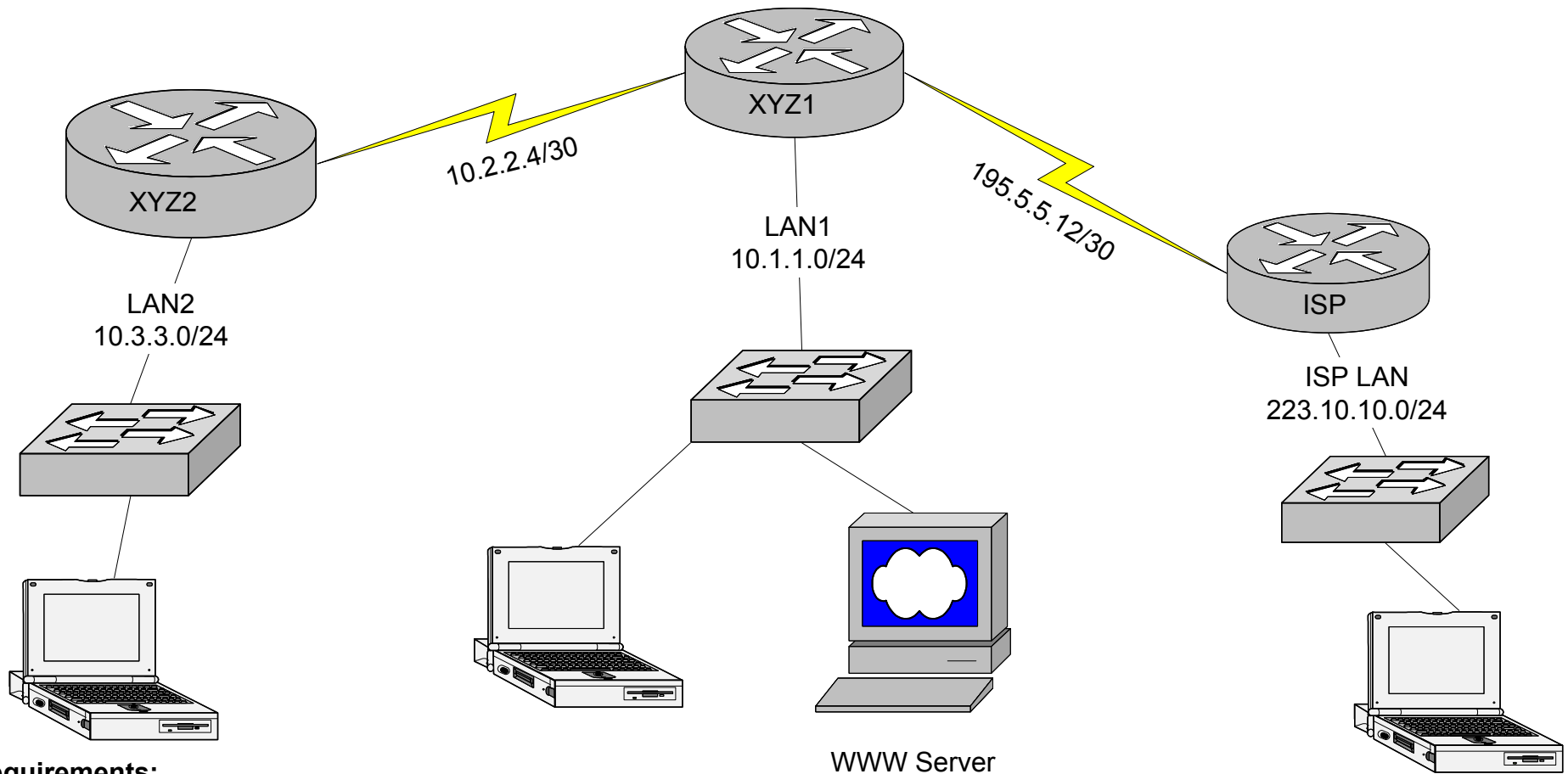


CCNA4 — Module 1 Challenge Lab



Requirements:

Configure XYZ2 to lease IP addresses to both LAN1 and LAN2.

Configure XYZ1 with NAT using the following guide lines:

The following CIDR block has been assigned to XYZ company: 195.5.5.16/29. Use the first available three address to translate.

LAN1 private addresses. Use the last available three addresses to translate LAN 2 private addresses.

WWW server on LAN1 will be assigned a private IP address **statically**. The domain Name xyz.com is registered with 195.5.5.19

Use RIP version 2 between XYZ1 and XYZ2. Use static routing between XYZ1 and ISP.

Capture and print the output of the following commands:

```
show ip int brief
```

```
show ip route
```

```
show ip nat translations
```

```
show ip dhcp binding
```

```
show run
```