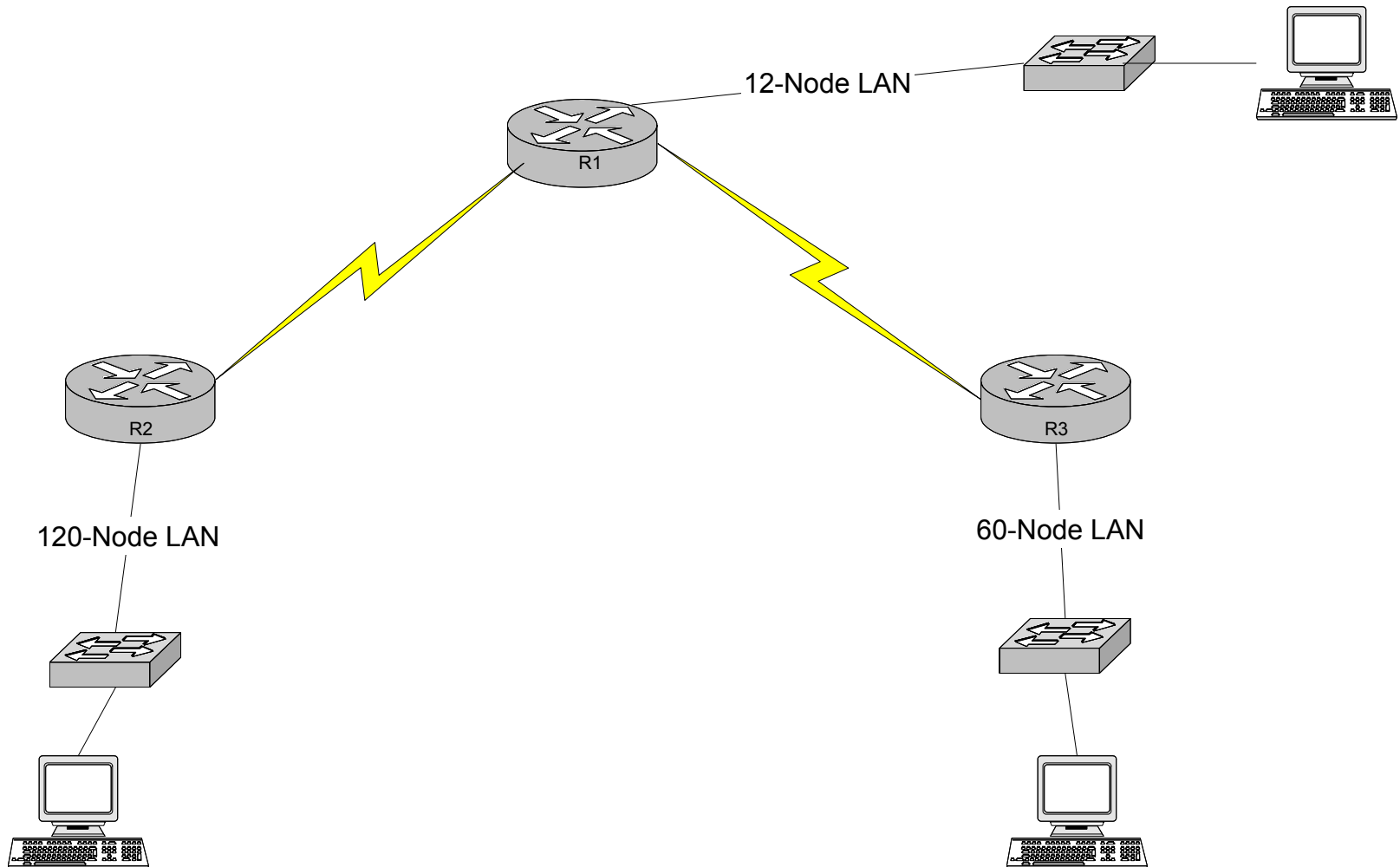


Module 1 Challenge LAB



Requirements:

Design the IP network using VLSM. Record subnet addresses and interface addresses on the diagram.

Connect the topology as indicated in the diagram (three students per group in recommended)

Configure the equipment using RIP V. 2

Capture and print the output of the following show commands:

- show ip int brief
- show ip route
- show ip protocol
- show run

Enjoy!