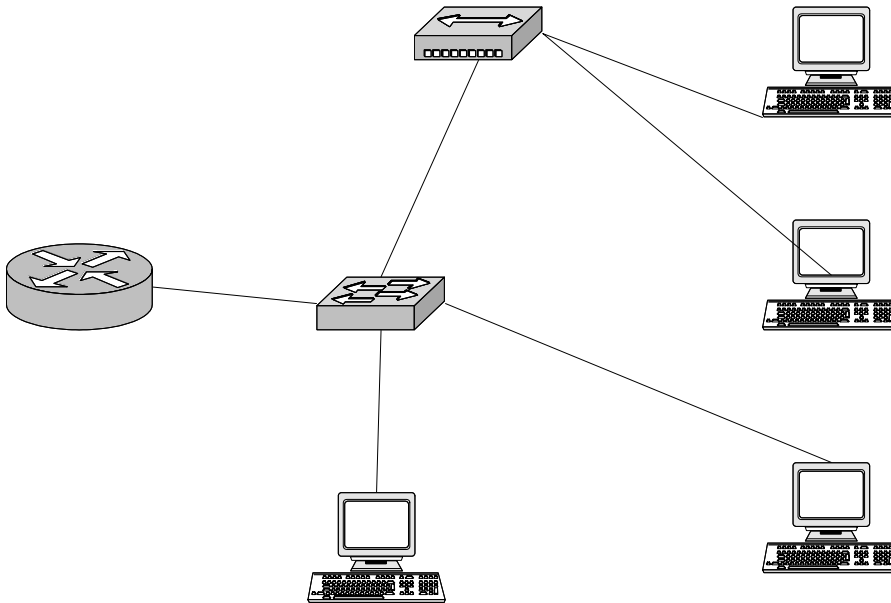


**LAN Switch Configuration**



1. Clear the saved configuration before Starting  
Command \_\_\_\_\_
  
2. Assign IP address 172.16.2.254, mask 255.255.255.0 to SW12. Assign it an appropriate default gateway.  
Command \_\_\_\_\_  
  
Command \_\_\_\_\_
  
3. Assign a host name of Switch 12  
Command \_\_\_\_\_

4. Choose port numbers to be used for each device, as if you were planning the physical installation,  
Fill out the following table:

Station #	Port # on the switch	Station's MAC Address
1		
2		
3		
4		

5. Configure your work station with the proper TCP/IP properties.  
Station's IP address: \_\_\_\_\_  
Subnet Mask: \_\_\_\_\_  
Default Gateway: \_\_\_\_\_

6. Telnet to the switch and perform the following configuration (Port configuration will vary depending on your station number):
7. Configure each port on the switch to use full duplex and port fast features  
Command \_\_\_\_\_  
  
Command \_\_\_\_\_
8. Configure Station 1 and station 2 so that their MAC addresses will be the only two addresses that can be learned on the corresponding port on the switch.  
Command \_\_\_\_\_
9. Configure the switch so that it will suspend the port in case of Security Address Violation.  
Command \_\_\_\_\_
10. Configure station 4 to be accessed by only station 3  
Command \_\_\_\_\_
11. Configure station 3 so that its MAC address will be permanent in the table  
Command \_\_\_\_\_
12. List the commands that you would use to verify all of these features:  
Command \_\_\_\_\_  
Command \_\_\_\_\_  
Command \_\_\_\_\_  
Command \_\_\_\_\_