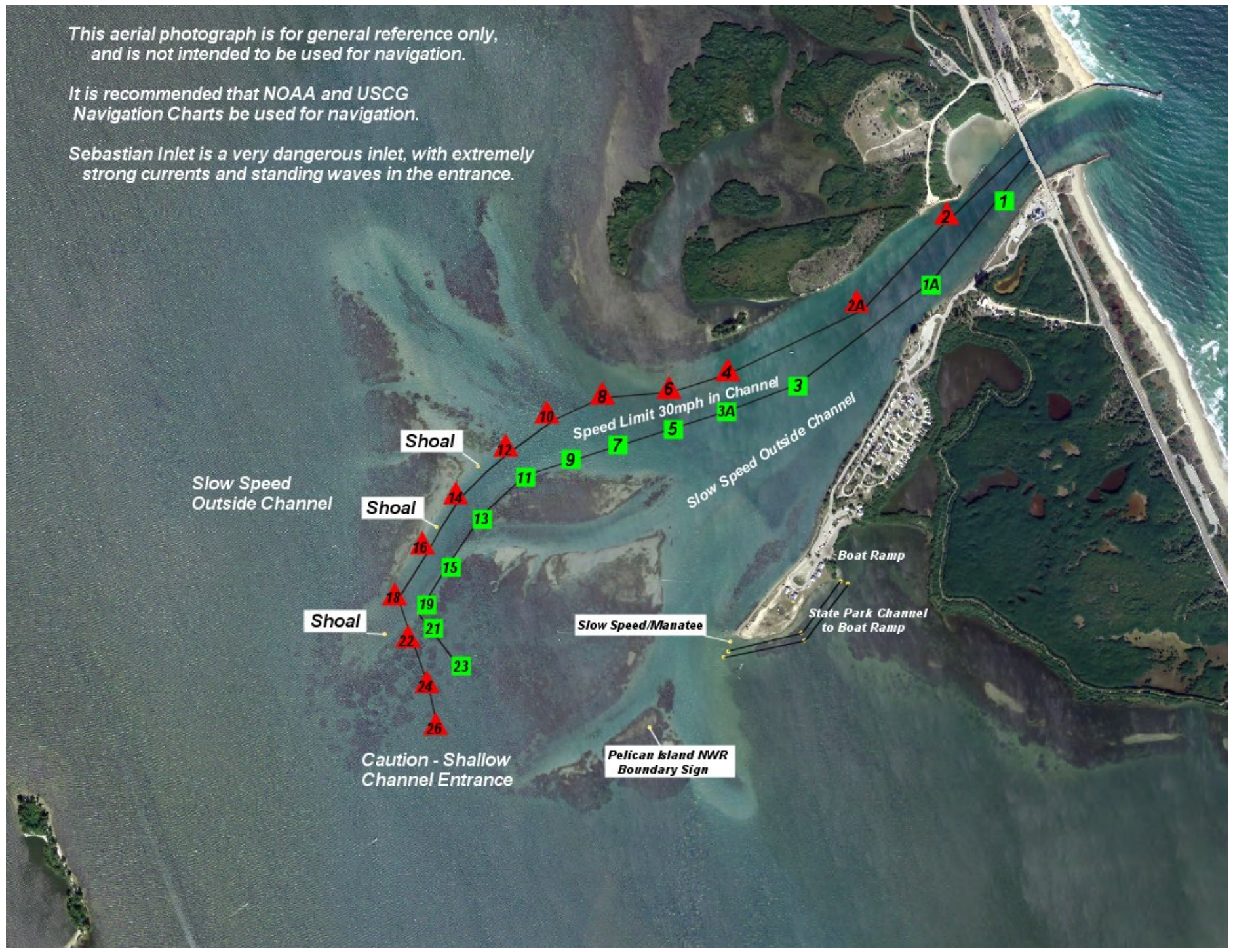


This aerial photograph is for general reference only, and is not intended to be used for navigation.

It is recommended that NOAA and USCG Navigation Charts be used for navigation.

Sebastian Inlet is a very dangerous inlet, with extremely strong currents and standing waves in the entrance.



Shoal

Slow Speed Outside Channel

Shoal

Speed Limit 30mph in Channel

Slow Speed Outside Channel

Boat Ramp

State Park Channel to Boat Ramp

Slow Speed/Manatee

Pelican Island MWR Boundary Sign

Shoal

Caution - Shallow Channel Entrance