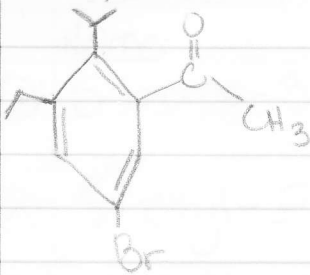


Name

Draw

①



① 4-ethyl-3-isopropyl benzaldehyde

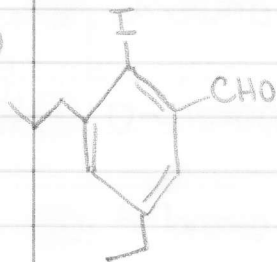
② 4-bromo-3-isopropylacetophenone

③ p-iodophenol

④ 3-bromo-2,5-dichloroaniline

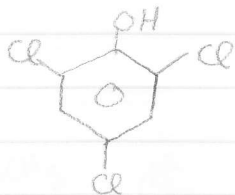
⑤ 5-benzyl-3-chloro-4-iodo-2-methylheptane

②

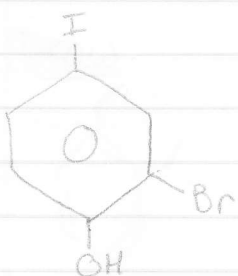


Aromatic?

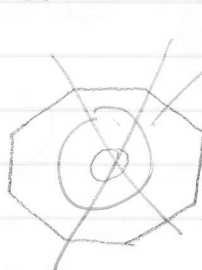
①



③

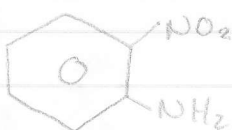


②

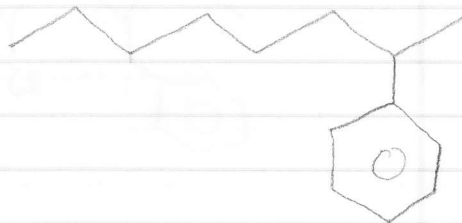


can only be used in Benzene!

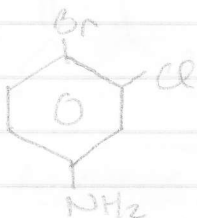
④



③



⑤

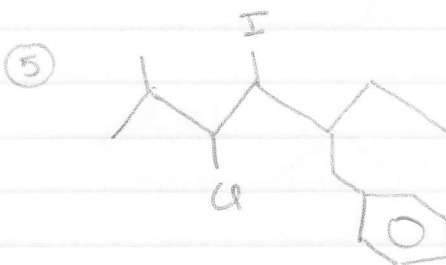
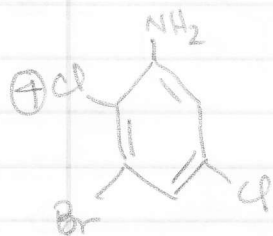
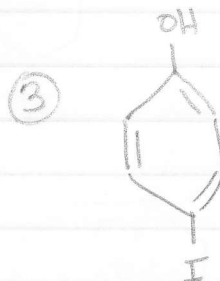
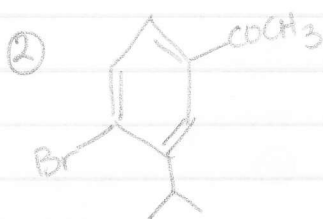
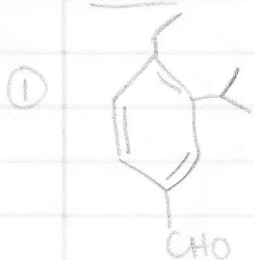


Answers:

Name:

- ① 5-bromo-3-ethyl-2-isopropylacetophenone
- ② 5-ethyl-2-iodo-3-propylbenzaldehyde
- ③ 2-bromo-4-iodophenol
- ④ o-nitroaniline
- ⑤ 4-bromo-3-chloroaniline

Draw



Aromatics:

- ① aromatic - $4n+2=6$ $n=1$ Follows Huckle's Rule
- ② non aromatic - Doesn't follow Huckle's Rule
- ③ aromatic - $4n+2=6$ $n=1$ Follow's Huckle's Rule