

Creating Your SAM Account

<http://sam.cengage.com>



COURSE TECHNOLOGY
CENGAGE Learning®

Welcome to SAM!

The premier testing and training tool for Microsoft® Office 2013 and Microsoft® Office 2010 is here!

SAM builds students' skills and confidence with a variety of real-life simulations, while engaging SAM Projects prepare students for today's workplace.

Need a SAM key code? To purchase a key code, visit [Cengagebrain](#)

First-time user or need help logging in? [Watch a video](#) with step-by-step instructions on how to log in to SAM for the first time.

Username:

Password:

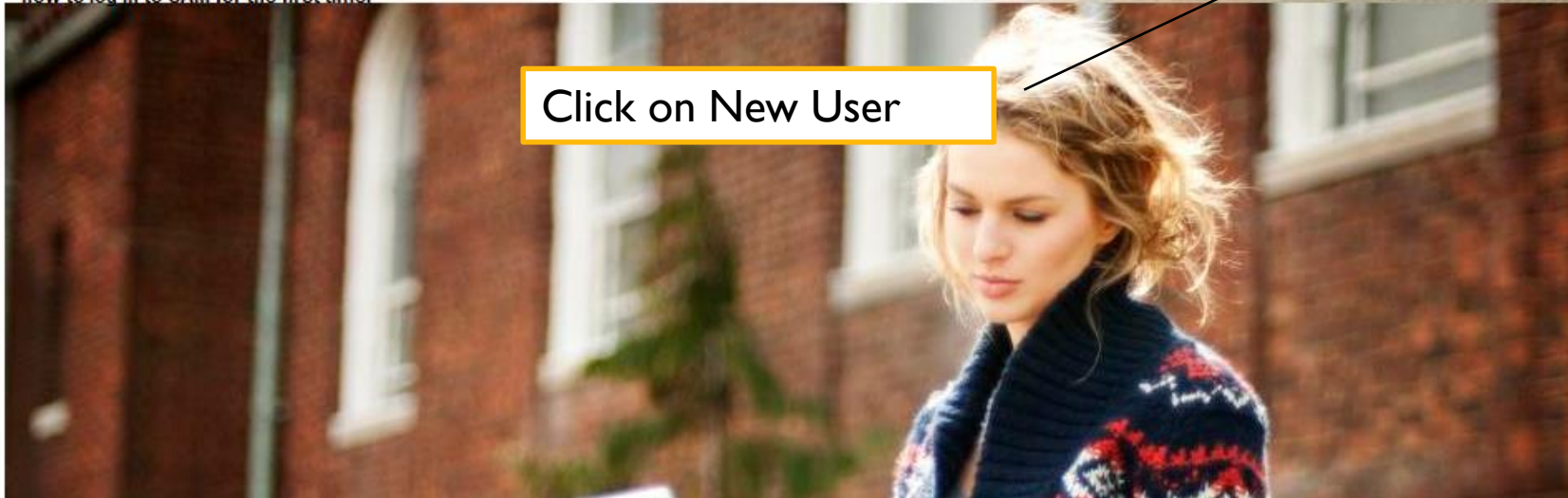
[Forgot your password?](#)

[Log In](#)

[New User](#)

[Help](#)

Click on New User



Enter the Institution Key



New User

Ins Key: T2018100

Please enter your 8-digit Institution Key:

Institution Key:

Login Help

[How to login to SAM 2010](#)

Technical Support

24/7 Chat Support [here](#)

Call (800) 648-7450

Monday - Thursday
8:30am to 9:00pm EST

Friday
8:30am to 6:00pm EST

[Submit online request](#)

Enter the code from the SAM access card or Cengage account



Please enter your 18-digit key code:

Key Code:

Login Help

[How to login to SAM 2010](#)

Technical Support

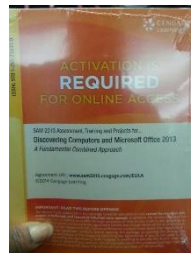
24/7 Chat Support [here](#)

Call (800) 648-7450

Monday - Thursday
8:30am to 9:00pm EST

Friday
8:30am to 6:00pm EST

[Submit online request](#)



Use your Atlas information to create your SAM Account

MY PROFILE

* first name:

middle init:

* last name:

* username:

* password:

* verify password:

alias:

id#:

* email:

alternate email:

time zone:

* secret question: --Select a secret question --

* secret answer:

Now you will need to create your SAM user profile. I recommend using your atlas [email](#) and [password](#) for your profile.

Ok – now click on Sections to join your class



Use the CRN (5-digit), Term and instructor name to locate your class. Once you have located your class, click on the section name to join.

You will be placed on a waiting list until I verify your enrollment on the class roster.

